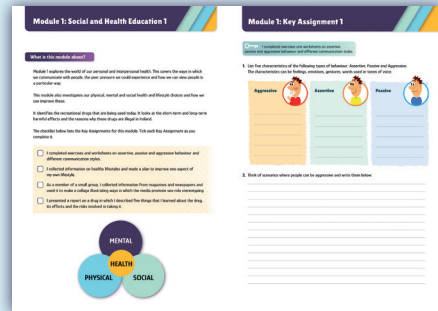


# Introduction

Welcome to *LCA Today* for Social Education. Social Education is a course in Leaving Certificate Applied (LCA) that focuses on personal and social development. This student guide will help you to complete all the important work for the course.

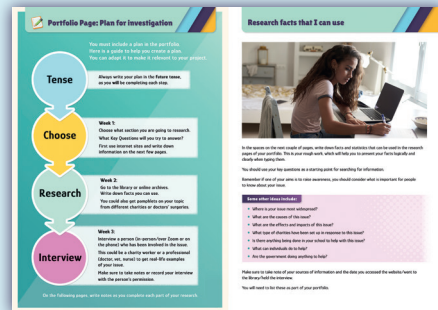
## Section 1: Key Assignments

This section will help you to successfully complete the Key Assignments for each of the six modules and get all six credits for assignment work.



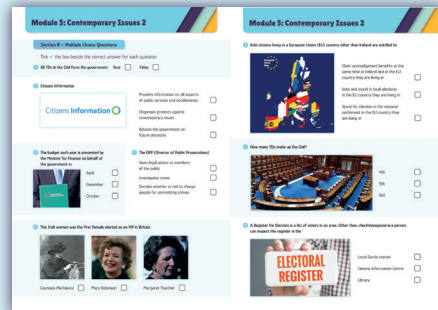
## Section 2: The Contemporary Issues Task

This section gives you step-by-step instructions for selecting a contemporary issue, preparing for your presentation and interview, and completing your portfolio.



## Section 3: The SEC exam paper

This section includes past paper questions for each of the six modules in Social Education, as well as two examples of aural tests from previous exam papers. It is a great way to prepare for the exam.



I hope that you enjoy using *LCA Today*.  
Best of luck!

*Niamh Blanche*

### Also available to teachers:

Teachers also have access to the following resources on [FolensHive.ie](https://folenshive.ie):

- Editable PowerPoint lessons for all key topics
- Comprehensive, editable Schemes of Work to plan lessons and to easily use *LCA Today* with their students
- Additional Section A exam questions with accompanying audio.